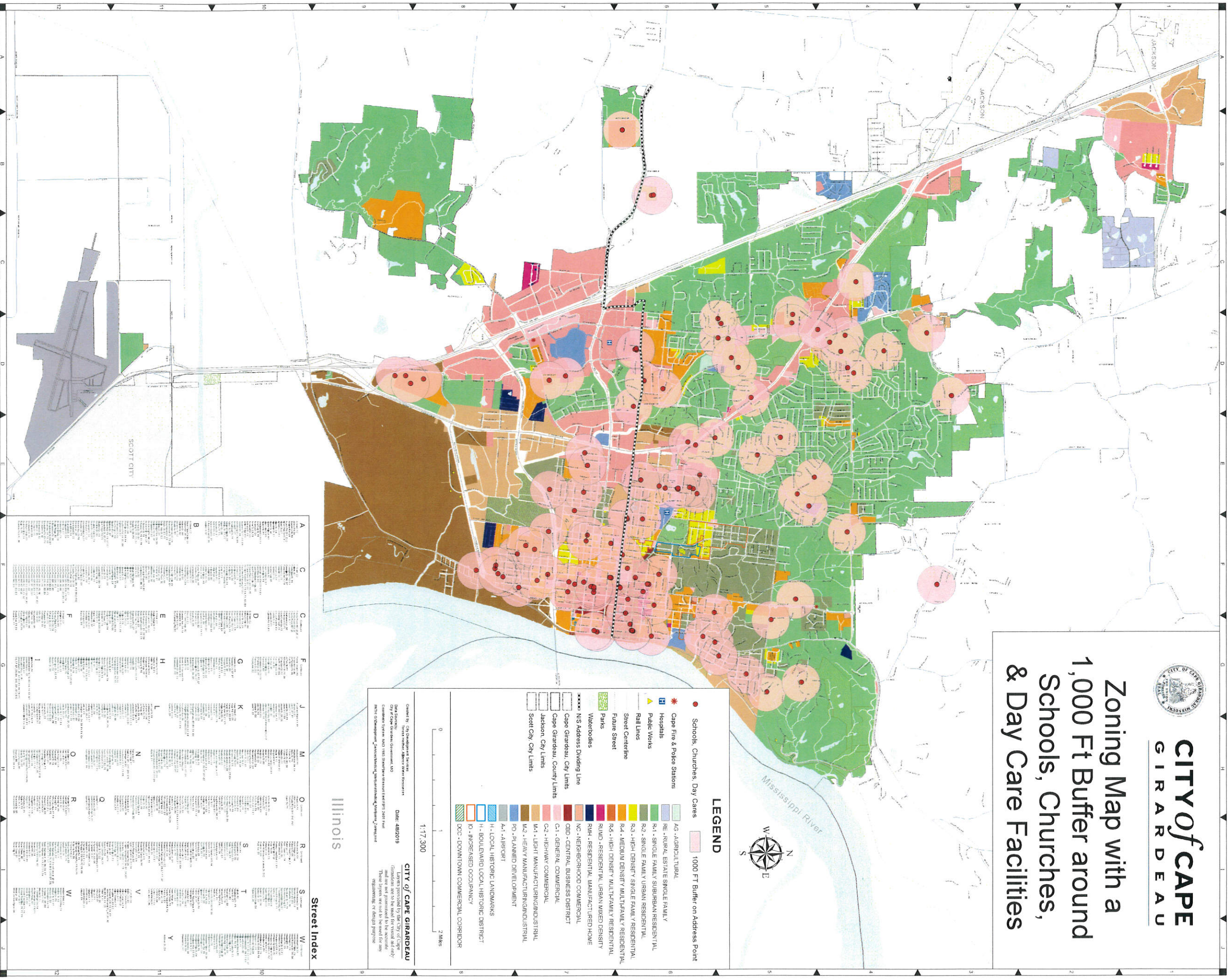




CITY of CAPE GIRARDEAU

Zoning Map with a 1,000 Ft Buffer around Schools, Churches, & Day Care Facilities



LEGEND

- Schools, Churches, Day Care
- 1000 FT Buffer on Address Point
- AG - AGRICULTURAL
- RE - RURAL ESTATE SINGLE FAMILY
- R1 - SINGLE FAMILY SUBURBAN RESIDENTIAL
- R2 - SINGLE FAMILY URBAN RESIDENTIAL
- R3 - HIGH DENSITY SINGLE FAMILY RESIDENTIAL
- R4 - MEDIUM DENSITY MULTIFAMILY RESIDENTIAL
- R5 - HIGH DENSITY MULTIFAMILY RESIDENTIAL
- RUMD - RESIDENTIAL URBAN MIXED DENSITY
- RHM - RESIDENTIAL MANUFACTURED HOME
- NC - NEIGHBORHOOD COMMERCIAL
- CBD - CENTRAL BUSINESS DISTRICT
- C1 - GENERAL COMMERCIAL
- C2 - HIGHWAY COMMERCIAL
- M1 - LIGHT MANUFACTURING/INDUSTRIAL
- M2 - HEAVY MANUFACTURING/INDUSTRIAL
- PD - PLANNED DEVELOPMENT
- A1 - AIRPORT
- H - LOCAL HISTORIC LANDMARKS
- H- - BOULEVARD LOCAL HISTORIC DISTRICT
- IO - INCREASED OCCUPANCY
- DCC - DOWNTOWN COMMERCIAL CORRIDOR

1:17,300

0 1 2 Miles

Created by: CITY ENGINEER AND PLANNING DEPARTMENT
 Date: APR 2019
 City of Cape Girardeau
 Landmarks provided by the City of Cape Girardeau and the County of Scott City. These symbols are used for informational purposes only. They are not intended to be used for any other purpose.

Street Index

Street	Street	Street	Street	Street	Street	Street	Street	Street	Street
A	B	C	D	E	F	G	H	I	J
K	L	M	N	O	P	Q	R	S	T
U	V	W	X	Y	Z	AA	AB	AC	AD